



# MONTHLY MEMBERSHIP PROGRESS REPORT

District 21 A

Results as of: 05/31/2018

GMT: WILLIAM PHILLIPI

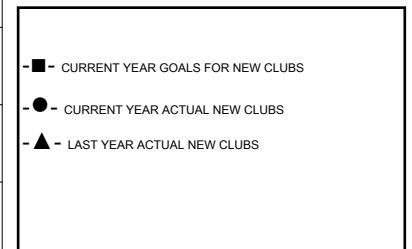
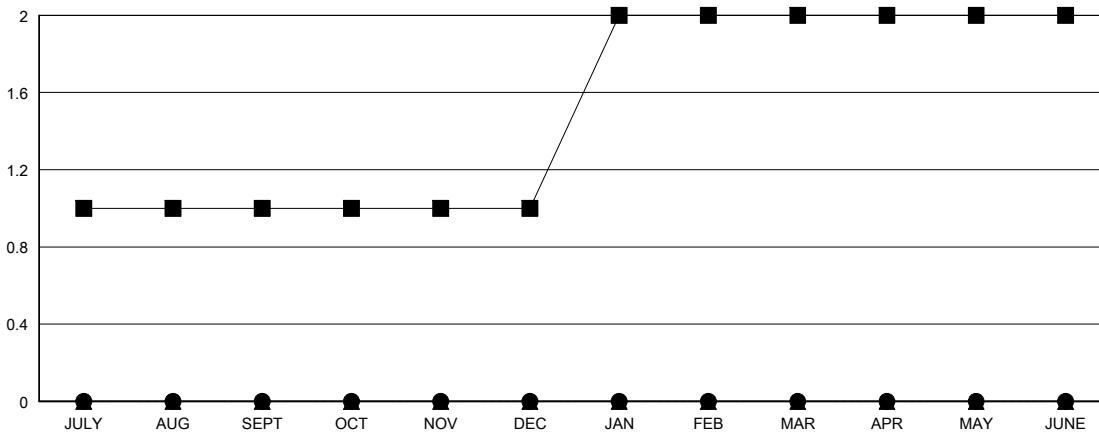
LOCATION ARIZONA

GMT CA

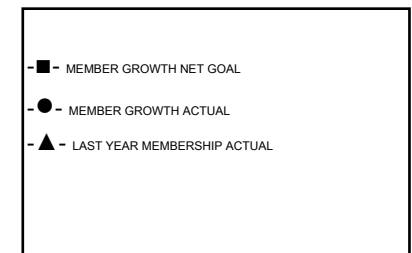
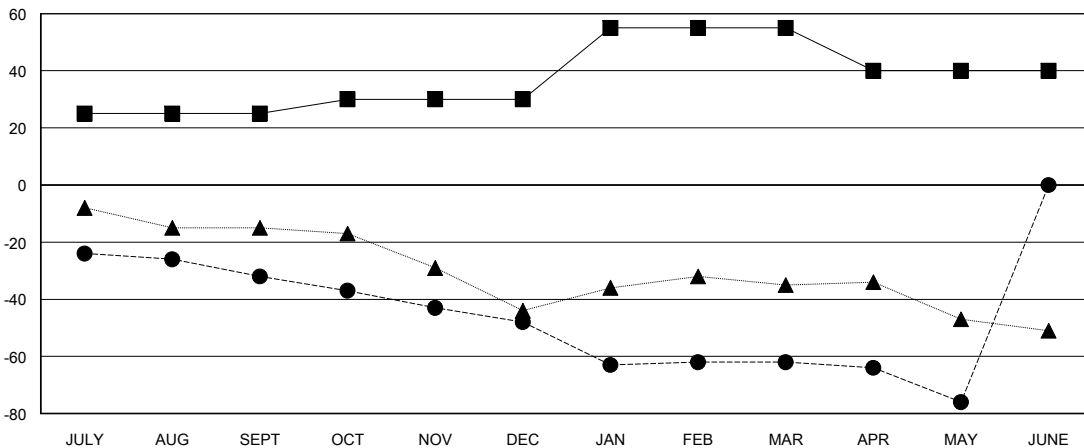
Clubs			
RESULTS FOR 2017-2018			
QUARTER	NEW CLUB GOAL	NEW CLUBS	DROPPED CLUBS
JULY/AUG/SEPT	1	0	2
OCT/NOV/DEC	0	0	0
JAN/FEB/MAR	1	0	0
APR/MAY/JUNE	0	0	0

Members			
RESULTS FOR 2017-2018			
QUARTER	MEMBER GROWTH NET GOAL	MEMBER GROWTH ACTUAL	DROPPED MEMBERS ACTUAL (including transfers)
JULY/AUG/SEPT	25	20	46
OCT/NOV/DEC	5	23	36
JAN/FEB/MAR	25	41	44
APR/MAY/JUNE	-15	19	29

GOALS AND ACTUAL NEW CLUBS CUMULATIVE



GOALS AND ACTUAL MEMBERS CUMULATIVE



DROPPED CLUBS: 2	22 CLUBS OF 34 ADDED 1 OR MORE NEW MEMBERS	<u>GENDER DISTRIBUTION</u> MALE 367 (56.72%) FEMALE 280 (43.28%) Women Percentage Fiscal Year Goal: 43%
<u>DROPPED MEMBERS</u> DECEASED 19 CLUB CANCELLED 0 OTHER 136 TOTAL 155	<a href="#">CLICK HERE FOR CUMULATIVE MEMBERSHIP DATA</a>	TOTAL FAMILY UNIT MEMBERS 161 FAMILY MEMBERS PAYING HALF DUES 81